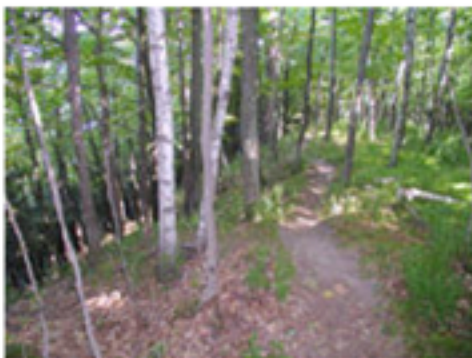


Hiking the Whaleback Natural Area Trail

The trailhead sign for the Whaleback area is on M-22, just south of Leland. Turn and park in the trailhead parking lot. This hike is somewhat challenging. It is a gradual climb through hardwoods to the flat top of the Whaleback formation.



Hike winds slowly uphill toward the Whaleback bluffs at the edge of Lake Michigan

Overlook on the bluffs of Lake Michigan. Just before this overlook, the tall woods shelter bald eagles: look for them flying above the observation deck as well as out over the water. What a treat!!

